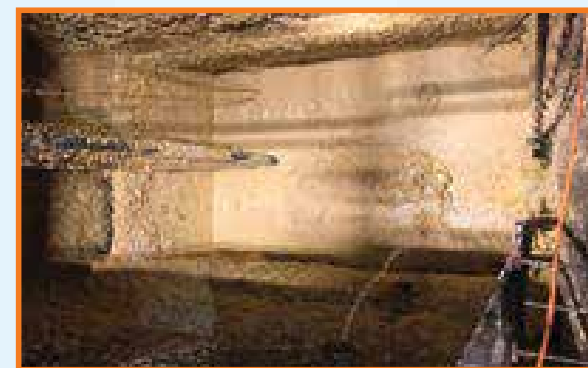


Traditional Wet Well



OverWatch Booster

Having problems with insufficient slope, flow, pipes or damage?
Boost it out, without replacing the entire line!

Features & Benefits

- Standard pipe diameter design;
- Increase capacity by boosting flow downstream;
- Improve velocity - Accelerate in-line wastewater circulation;
- A gravity-fed line of 152 mm (6 in) to 1016 mm (40 in) diameters



Packaged Lift Stations

Incorporates all the advantages of the Direct In-Line Pump System into a ready to install, stainless steel pump room.

Benefits:

Economical

- Ideal for transportation and installation costs;
- Quick to connect without the need for a valve vault;
- Reduces excavation depth required;
- Enables future modifications to be made.

Robuste

- 100% waterproof;
- Non-porous, with no fragile tank adapters;
- Resistance to ground settlement, poor backfilling, impacts during installation, and stress caused when pouring the upper concrete slab.

Sustainable

- Corrosion and erosion resistance prevents systems from degrading over time.
- Ecological designed with non-oil-based products



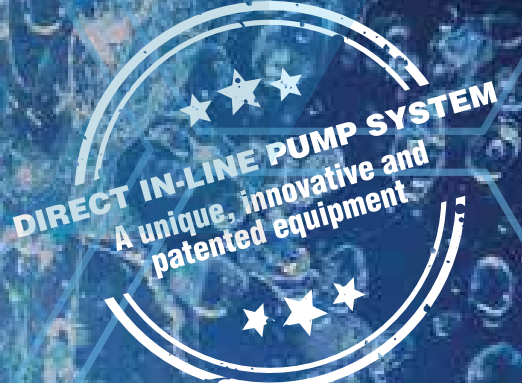
Portugal, Spain, Saudi Arabia and African Continent

DIBITEC - Sociedade de Construções e Representações, Lda.
 Zona Industrial do Salgueiro Lote 2, 3530-259 MANGUALDE - PORTUGAL

T: (+351) 232 924 246
 E: geral@dibitec.pt | dibitec@gmail.com
 www.dibitec.pt



Changing the world one wet well at a time



www.dibitec.pt





Industrial

Food, Beverage & Pharmaceutical Processing

Stainless Steel body designed to withstand the effects of corrosion from harsh materials and solutions.

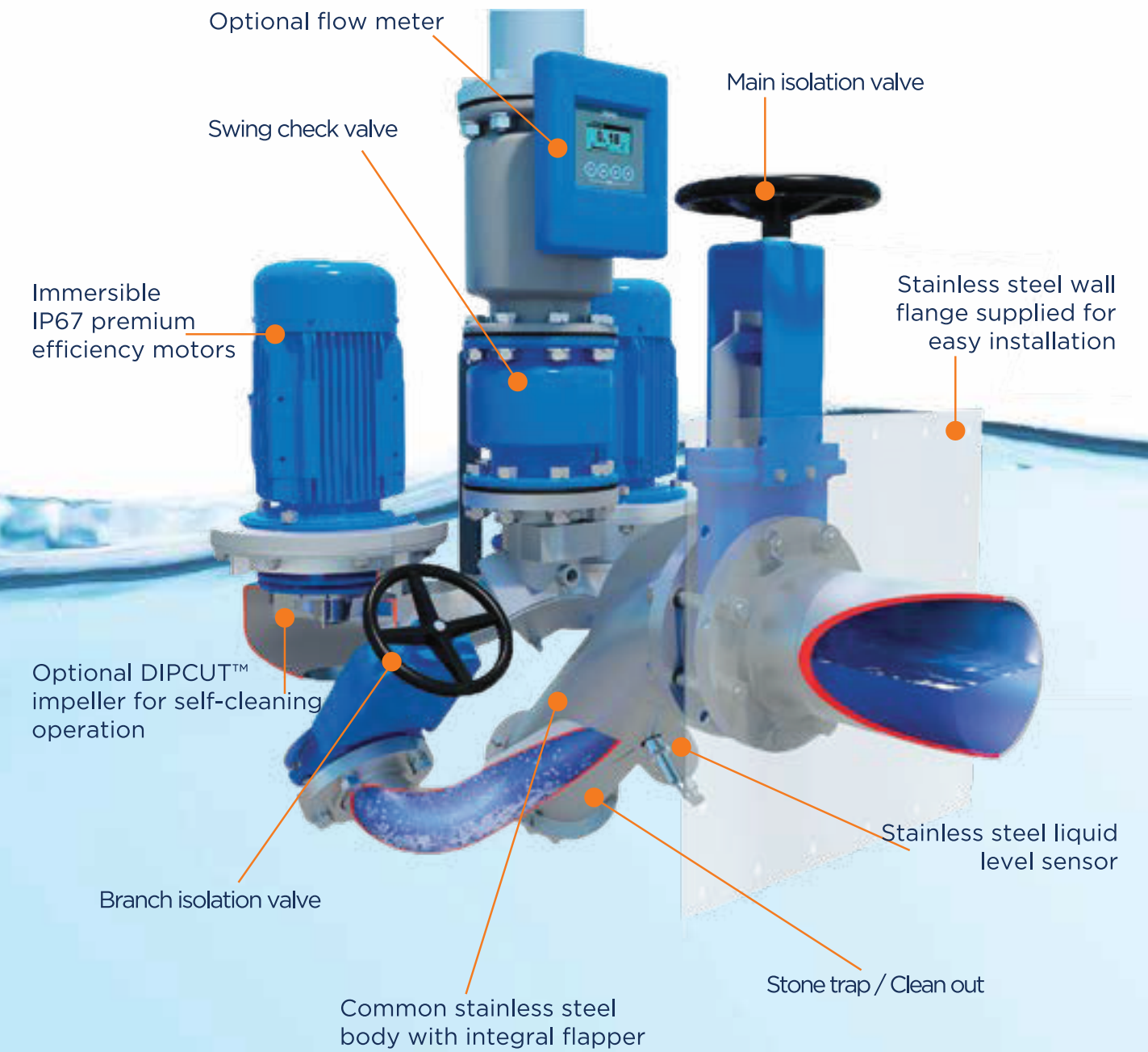
- ⊗ High temperature wash-down / Clean in Place (CIP);
- ⊗ Fats, Oils, Greases (F.O.G.);
- ⊗ Solids handling;
- ⊗ Acidic and caustic processing.



Self Monitoring

Save Time and Money with Improved Operational Efficiencies

- ⊗ Smart sensing - adjusts in real time to manage flow;
- ⊗ Avoids system failures and downtime with a two pump design;
- ⊗ Less fluid detention time;
- ⊗ Detects and removes clogs without human intervention;
- ⊗ Remote monitoring options.

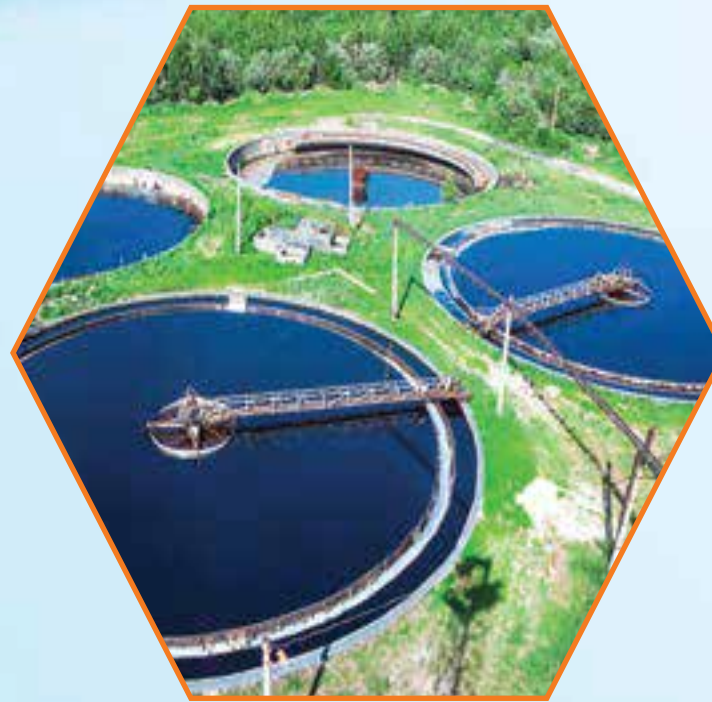


Municipal

Lift Stations & Wastewater Treatment Facilities

Breakthrough technology designed to lift influent at the point of entry, eliminating the wet well..

- ⊗ Sewage & solids handling;
- ⊗ Stormwater management;
- ⊗ Wastewater;
- ⊗ Lift / Pump stations.



Eliminate the Wet Well

Creates Safer Working Conditions for Maintenance Crews and Reduces Environmental Impact

- ⊗ No buildup or exposure to hazardous odors, bacteria, or Hydrogen Sulfide (H2S) gases;
- ⊗ Reduces danger of explosions;
- ⊗ Minimizes excavation;
- ⊗ Simplified installation & maintenance - no more screen cleaning!



Commercial

Hotels, Hospitals, Correctional Facilities, Universities & Residential Complexes

Effluent is contained, eliminating odors and reducing maintenance..

- ⊗ Wastewater;
- ⊗ Stormwater management;
- ⊗ Boiler condensate handling;
- ⊗ Solids handling;



Non-clog

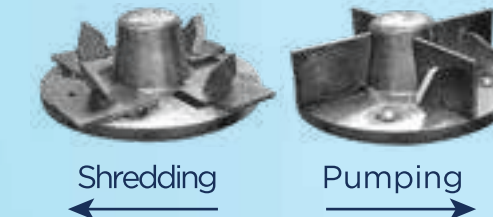
Designed for Reliability. Keeps a CarefulWatch so You Don't Have to

- ⊗ No downtime from a clogged pump;
- ⊗ Reduces maintenance;
- ⊗ Redundant dual pump design minimizes downtime;
- ⊗ No debris or trash removal;
- ⊗ Extended life expectancy;
- ⊗ Optional patented DIPCUT™ impeller.

Stainless Steel Impeller Options

DIPCUT®

- Pumping & Shredding
- Consume less energy
- Does not effect hydraulic efficiency



Vortex



High Efficiency

